



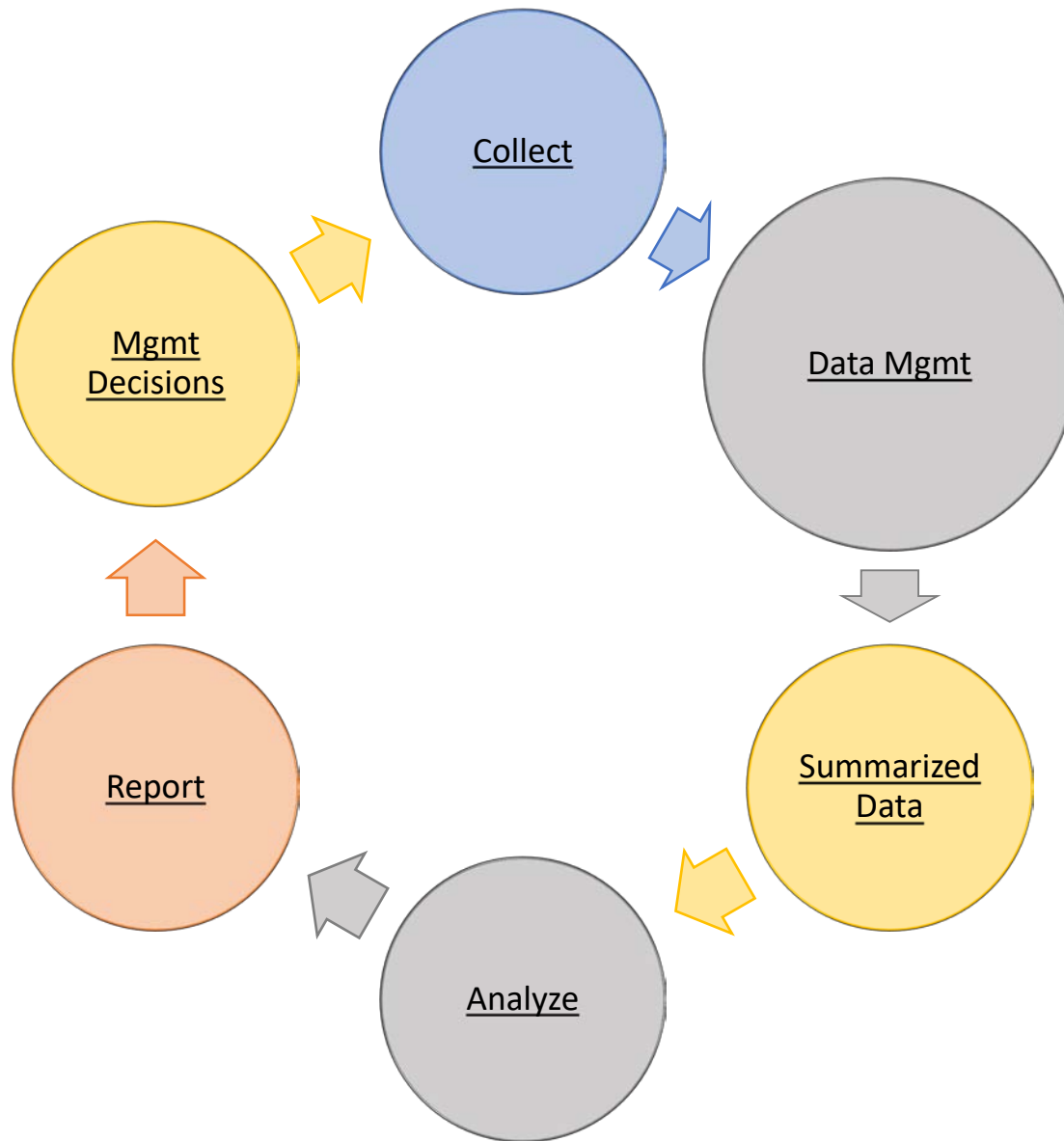
Nez Perce Tribe: Progress Update

2019 Tribal Data Workshop

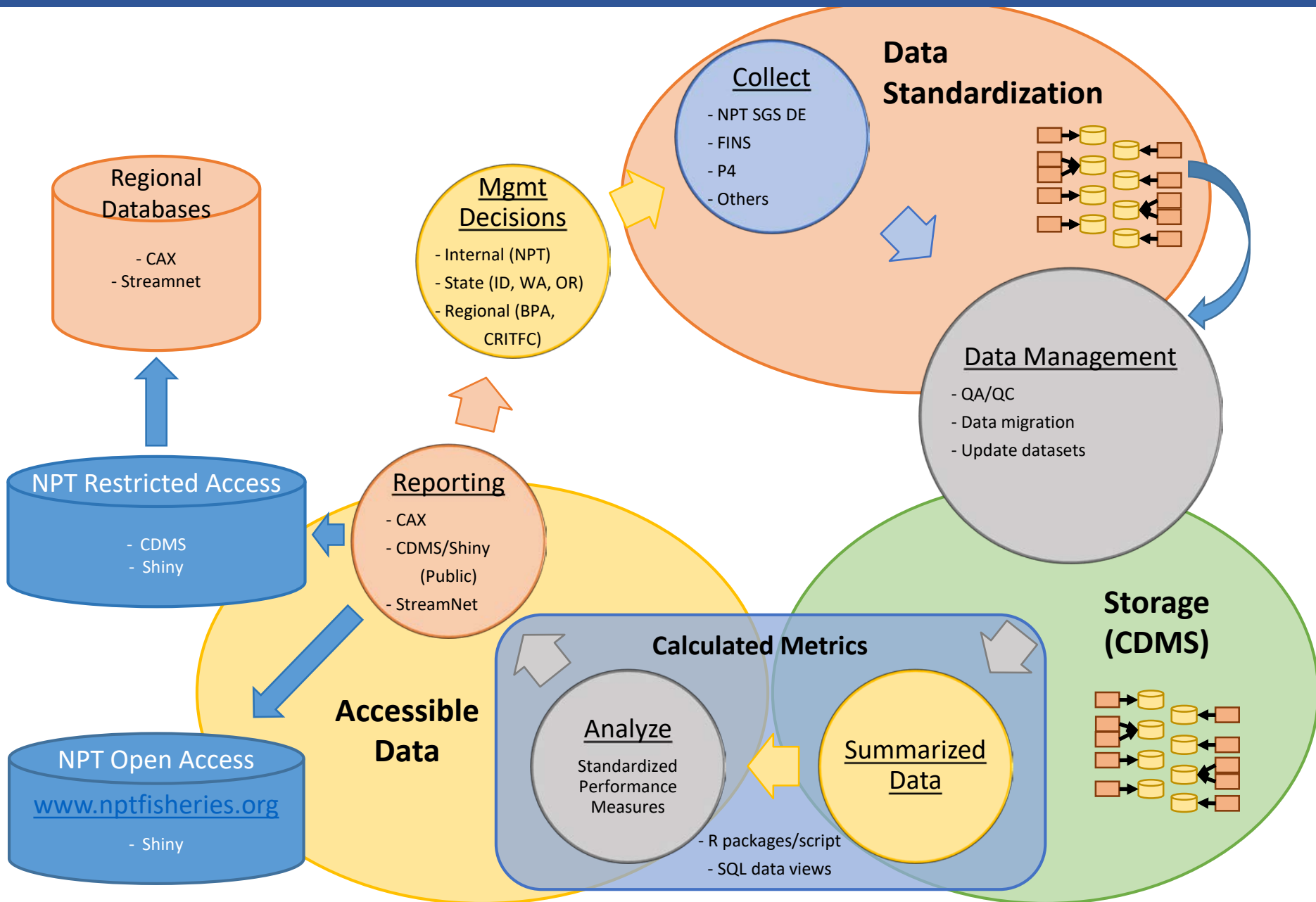
Clark Watry & Samantha Smith

April 16 – 17, 2019

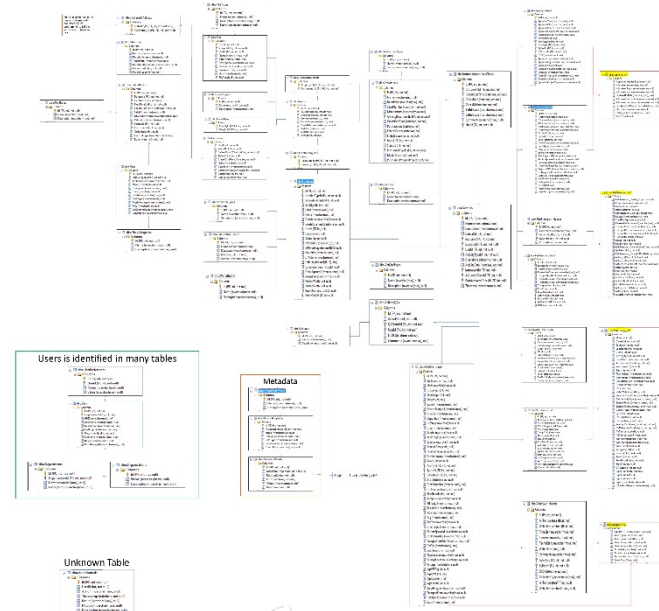
Conceptual Data Life Cycle Model



CDMS Data Life Cycle



Implementing CDMS



CDMS – Getting Started



CDMS Projects My Projects My Datasets Tools Admin

Clark Watry

Welcome to CDMS

Projects are listed below. Click a project name or click "New Project" to create one.

New Project

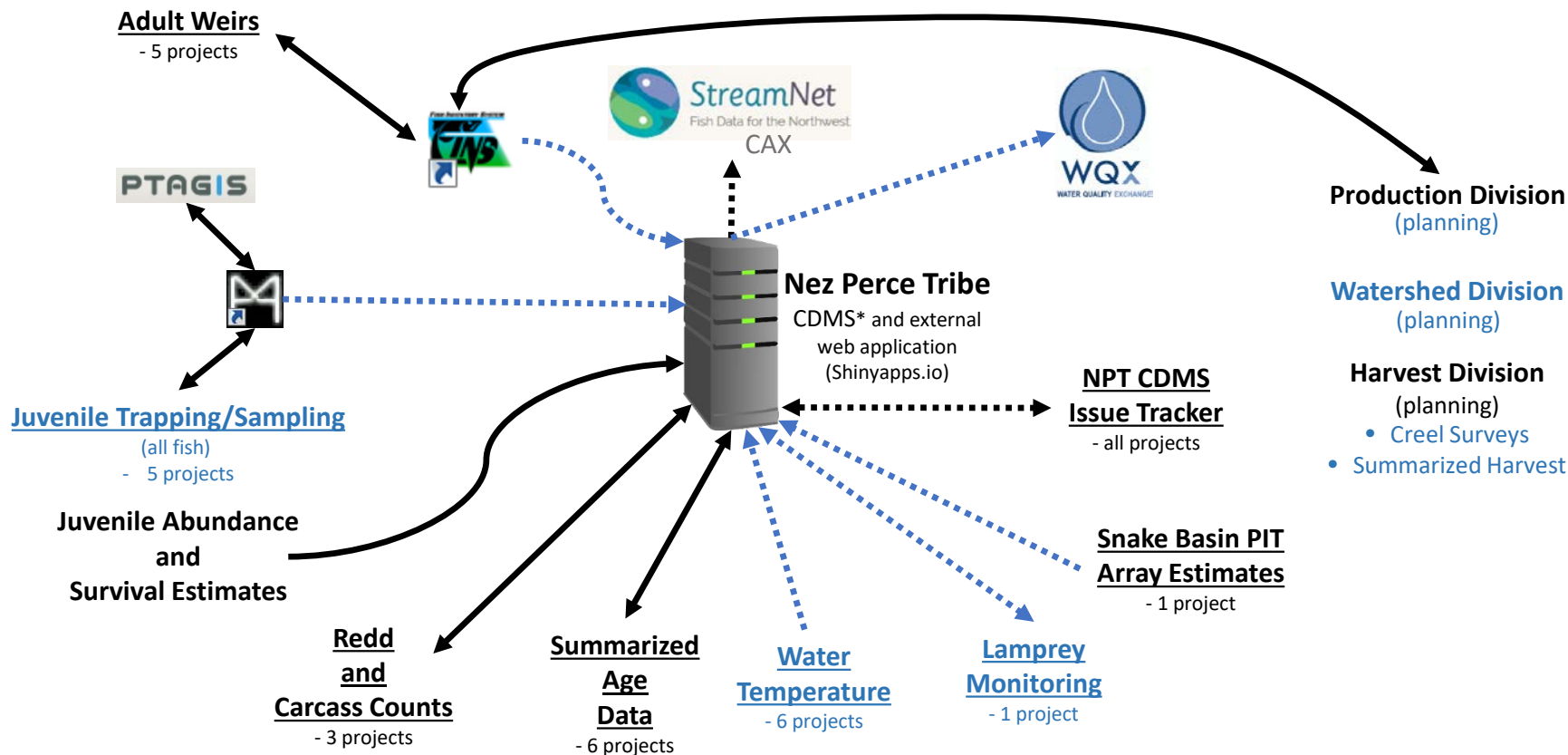
Program ↑	Type	Project Name
DFRM > Research	Project	Adult Chinook and Steelhead Abundance Monitoring
DFRM > Research	Project	Grande Ronde Supplementation M&E
DFRM > Research	Project	Imnaha River Smolt Monitoring
DFRM > Research	Project	Imnaha River Steelhead Abundance Monitoring
DFRM > Research	Project	Johnson Creek Artificial Propagation and Enhancement M&E
DFRM > Research	Project	NPTH Chinook Salmon Monitoring and Evaluation
DFRM > Research	Project	NPTH In-Hatchery M&E and Marking
DFRM > Research	Project	Snake River Basin Adult PIT Tag Monitoring
DFRM > Research	Project	Steelhead Effectiveness Monitoring and Evaluation
DFRM > Research	Project	StreamNet

Total projects: 10

NPT Data Flow Timeline



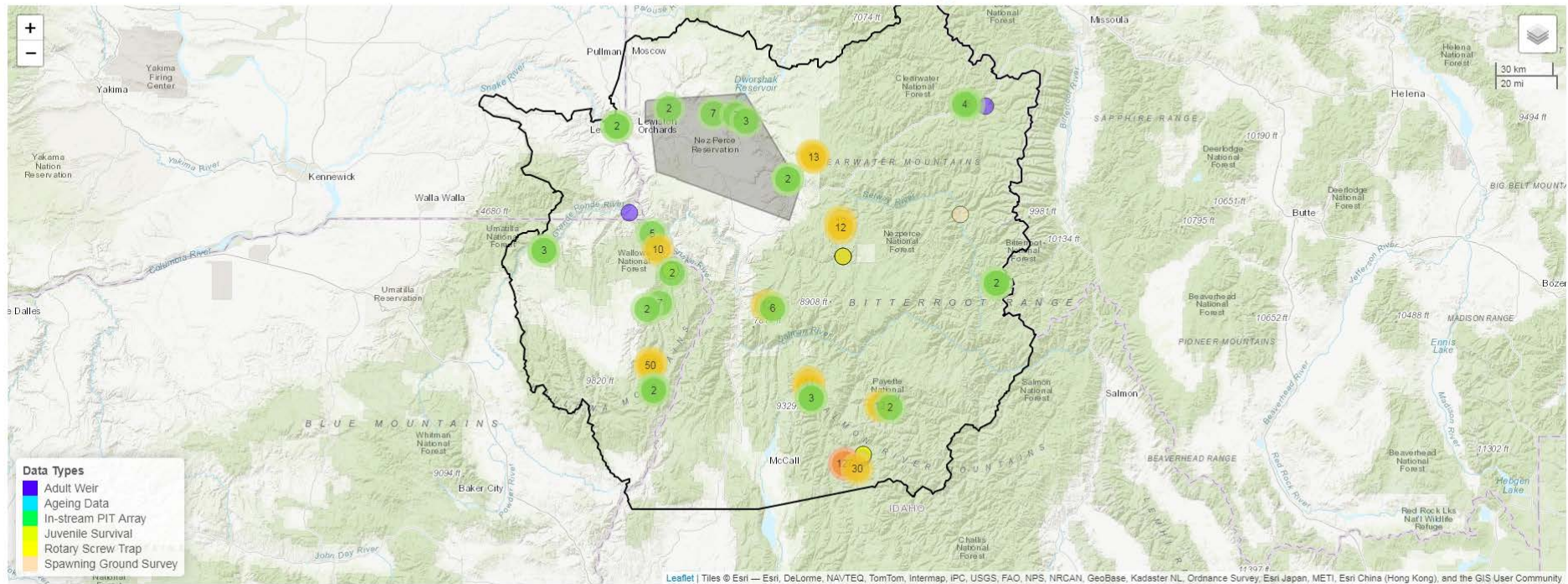
Department Of Fisheries Resources Management Research Division



*central data management system

Department of Fisheries Resources Management

Data Summaries and Visualizations Web Application



The Kus web application is intended to provide near real-time data summaries and visualizations for Department of Fisheries Resources Management staff and to support Snake Basin fisheries management decisions. The tools also creates easy access to valuable fish information for general public consumption and informs Nez Perce Tribal members of the most current and best fishing opportunities.

KUS – Visualizations and Tabular Data



DFRM Home Kus Home Summarized Data Fish Management

Login Link



Data Collected From Spawning Ground Surveys

Select species, streams and spawn year range of interest then click "Query Data".

Species:

Spring/Summer Chinook
Fall Chinook
Summer Steelhead
Bull Trout

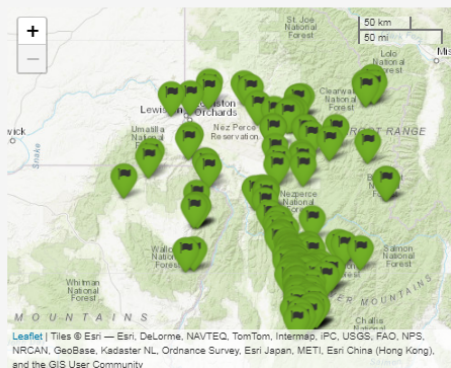
Streams:

Sand Creek
Secesh River
Selway River
Skookum Creek
Slate Creek
South Fork Clearwater River

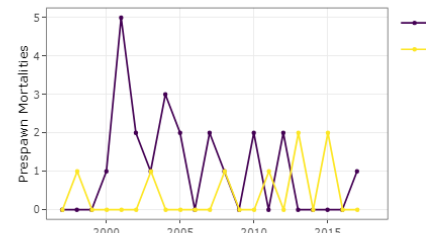
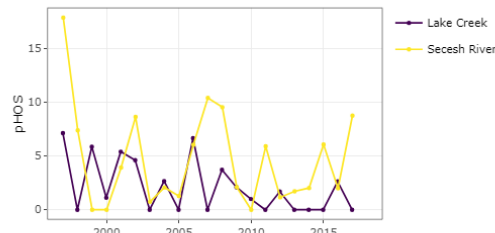
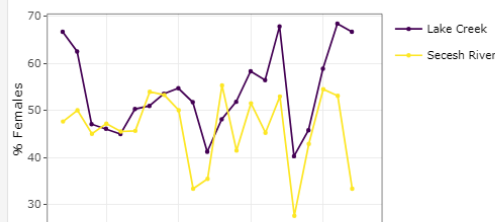
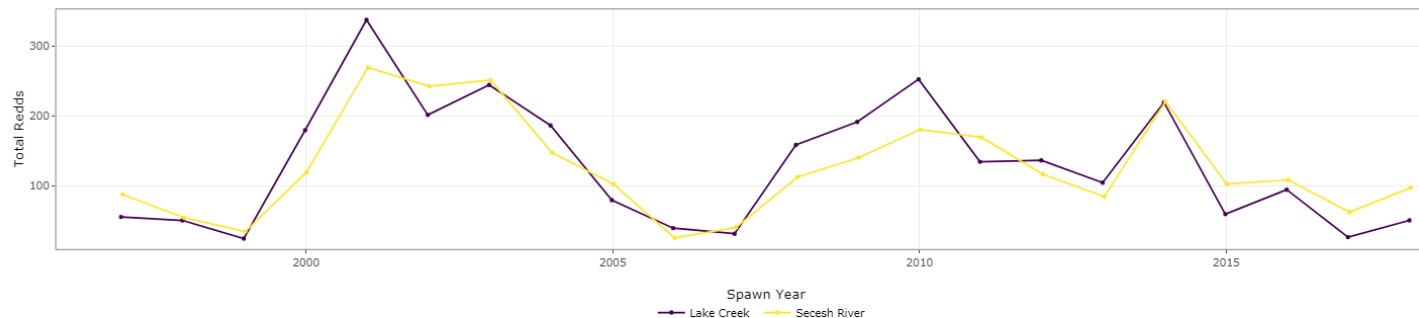
Spawn Year:

1988 2018

Query Data



Total Redds, Percent Females, Percent Hatchery Origin Spawners (pHOS), and Prespawn Mortalities per Spawn Year



Stream Name	Year	Species	Total Redds	Female	Male	%Females	Hatchery Origin	Natural Origin	% Hatchery Spawners	Prespawn Mortality	Carcass Total
		All				A			p	p	
1 Lake Creek	1997	Spring/Summer Chinook	55	18	9	66.67	2	26	7.14	0	28
2 Lake Creek	1998	Spring/Summer Chinook	50	15	9	62.5	0	24	0	0	24
3 Lake Creek	1999	Spring/Summer Chinook	24	8	9	47.06	1	16	5.88	0	17

Existing Network Servers



Lapwai Servers

Coho-fs Server

DFRM-SQL.nezperce.org Server

www.nptfisheries.org Server

www.nptfishpermits.com Server

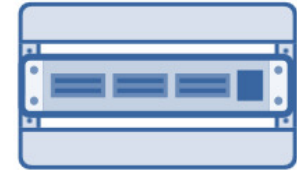
sql.nptfishpermits.com Server

Bulltrout-fs Server

DFRM-BACKUP.nezperce.org Server

sql.nptfisheries.org Server

Field Office Servers



Orofino Field Office
Lamprey-fs Server



Joseph Field Office
Steelhead-fs Server



McCall Field Office
Sockeye-fs Server

Proposed Network Infrastructure Plan



Lapwai Servers

Coho-fs Server

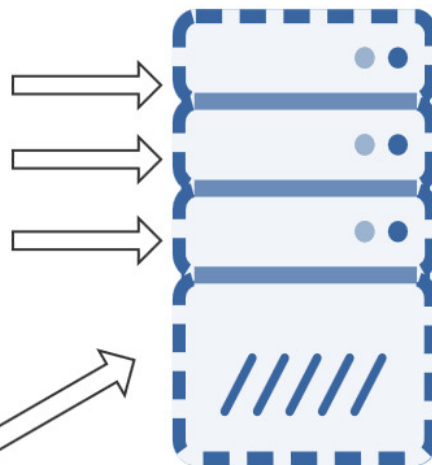
DFRM-SQL.nezperce.org Server

www.nptfisheries.org Server

www.nptfishpermits.com Server

sql.nptfishpermits.com Server

Bulltrout-fs Server



Virtual Server-Tribal Information Systems Maintained and located in Lapwai

DFRM-BACKUP.nezperce.org Server

sql.nptfisheries.org Server

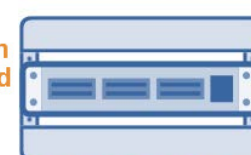
Field Office Servers



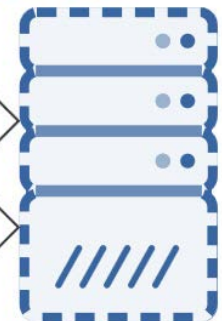
Orofino Field Office
Lamprey-fs Server



Joseph Field Office
Steelhead-fs Server



McCall Field Office
Sockeye-fs Server



Virtual Server-Tribal Information Systems Maintained and located in Lapwai

Questions?



ENTERING
NEZ PERCE
INDIAN RESERVATION