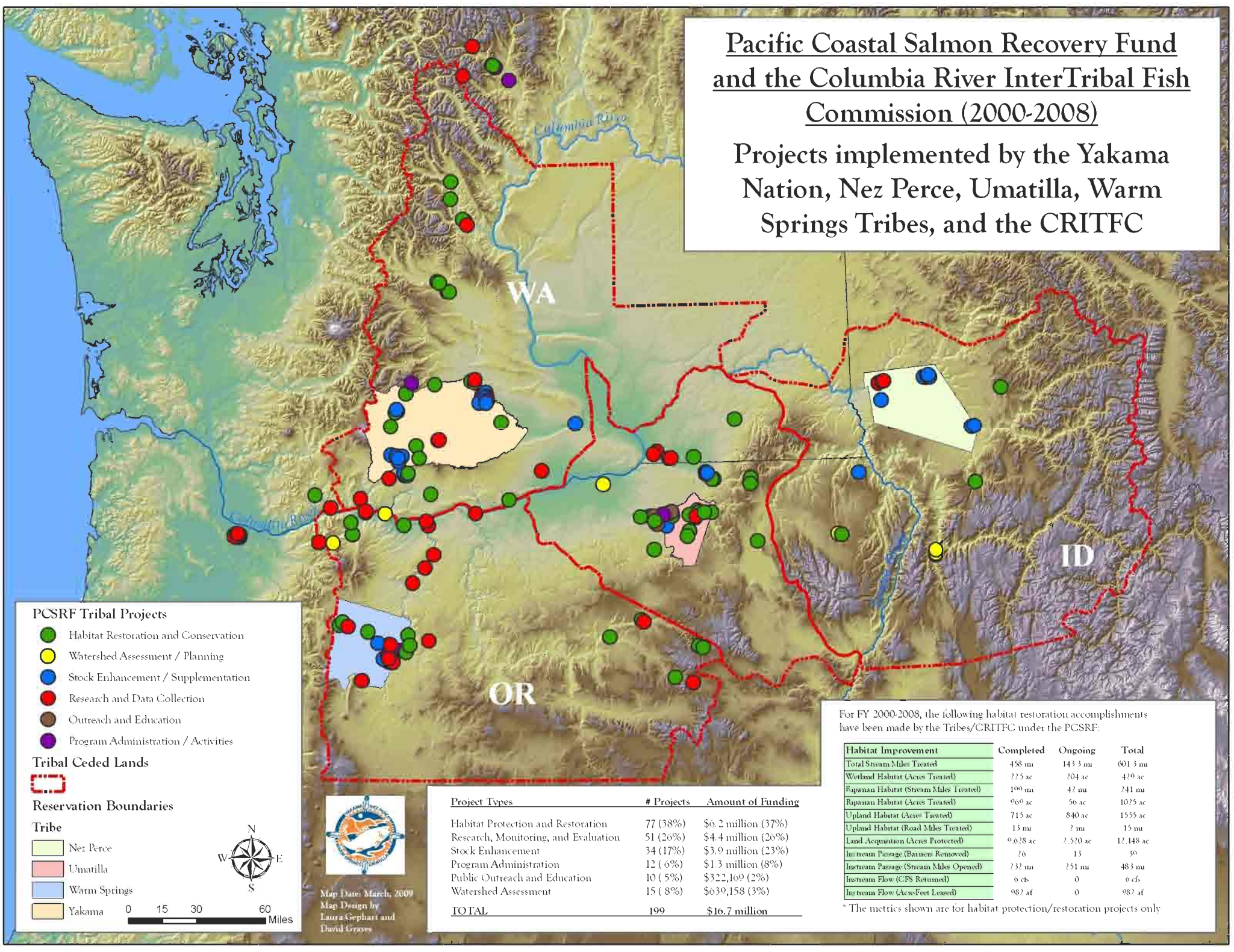


# Pacific Coastal Salmon Recovery Fund and the Columbia River InterTribal Fish Commission (2000-2008)

## Projects implemented by the Yakama Nation, Nez Perce, Umatilla, Warm Springs Tribes, and the CRITFC



- PCSRF Tribal Projects**
- Habitat Restoration and Conservation
  - Watershed Assessment / Planning
  - Stock Enhancement / Supplementation
  - Research and Data Collection
  - Outreach and Education
  - Program Administration / Activities

**Tribal Ceded Lands**

- Reservation Boundaries
- Tribe**
- Nez Perce
  - Umatilla
  - Warm Springs
  - Yakama



Map Date: March, 2009  
Map Design by  
Laura Gephart and  
David Groves

Project Types	# Projects	Amount of Funding
Habitat Protection and Restoration	77 (38%)	\$6.2 million (37%)
Research, Monitoring, and Evaluation	51 (26%)	\$4.4 million (26%)
Stock Enhancement	34 (17%)	\$3.9 million (23%)
Program Administration	12 (6%)	\$1.3 million (8%)
Public Outreach and Education	10 (5%)	\$322,169 (2%)
Watershed Assessment	15 (8%)	\$639,158 (3%)
<b>TOTAL</b>	<b>199</b>	<b>\$16.7 million</b>

For FY 2000-2008, the following habitat restoration accomplishments have been made by the Tribes/CRITFC under the PCSRF:

Habitat Improvement	Completed	Ongoing	Total
Total Stream Miles Treated	458 mi	143.3 mi	601.3 mi
Wetland Habitat (Acres Treated)	225 ac	204 ac	429 ac
Riparian Habitat (Stream Miles Treated)	100 mi	42 mi	241 mi
Riparian Habitat (Acres Treated)	969 ac	56 ac	1025 ac
Upland Habitat (Acres Treated)	715 ac	840 ac	1555 ac
Upland Habitat (Road Miles Treated)	13 mi	2 mi	15 mi
Land Acquisition (Acres Protected)	0.628 ac	2,520 ac	12,148 ac
Instream Passage (Barriers Removed)	26	15	30
Instream Passage (Stream Miles Opened)	232 mi	251 mi	483 mi
Instream Flow (CFS Returned)	6 cfs	0	6 cfs
Instream Flow (Acres-Feet Lost)	987 af	0	987 af

\* The metrics shown are for habitat protection/restoration projects only